

## MEGALOCHARI XIV



### PARTICULARS

Vessel Type	Tug
IMO Number	9199452
Port of Registry	Piraeus
Year Built	1998
Classification	Hellenic Merchant Ship Inspectorate

### DETAILS

Length Overall	29.0 m
Breadth	9.02 m
GRT-NRT	191.73 / 30.56
Maximum draft	4.1m
Max Speed/ Consumption 24h	11 kn / 7 m <sup>3</sup>
Economical speed/ Consumption 24h	9.5 kn / 5.3 m <sup>3</sup>
Bollard Pull	36.4 t
Sewage Plant	7 m <sup>3</sup>
Rudders	2x Fixed pitch
Joystick	1x Fitted

### CAPACITY

Fuel Oil	72.4 m <sup>3</sup>
Potable Water	12.4 m <sup>3</sup>
Sewage	7 m <sup>3</sup>

### MACHINERY

Main Engine	2x Yanmar M220EN 1200 BHP each
Generators	2x Cummins 100 BHP - 70KW each
Propulsion	2x Fixed pitch propellers

### ACCOMMODATION

Berths	8
Total	5

**FIRE FIGHTING**

Monitors 2  
Pumps 1x 700 m<sup>3</sup>/h

**DECK EQUIPMENT**

**Towing Winch**

Type Single drum with remote control on deck and wheelhouse  
Pull 20 t  
Wire Capacity 550 m x 38 mm  
Brake Holding 70 t

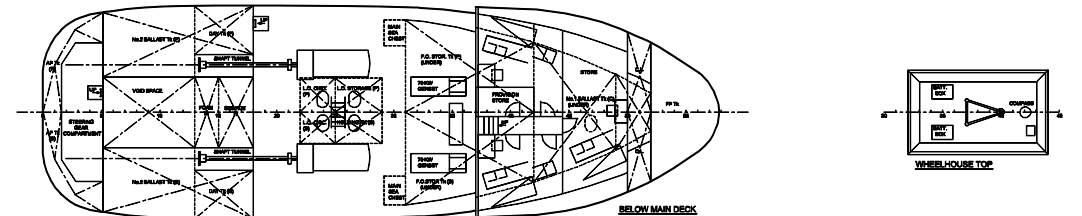
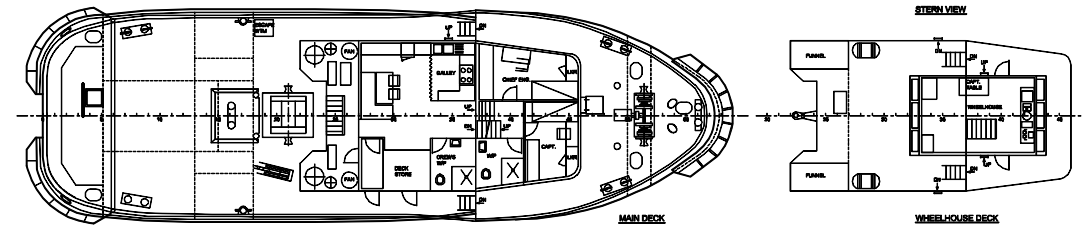
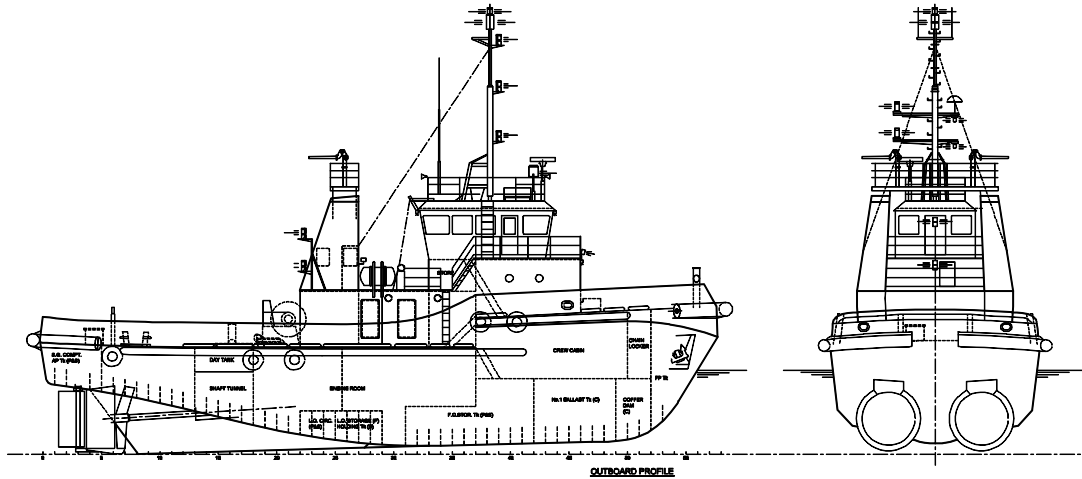
**LIFESAVING**

Liferafts 2x FMS FZ-002 FK-2400 25 persons  
Lifejackets 8  
FRC/Rescue Boat/Davit  
Lifebuoys 6

# GENERAL ARRANGEMENT

## MEGALOCHARI XIV

No	Revision	Date



### PRINCIPAL DIMENSIONS

Length O.A.:	28.000 M
Length B.P.:	28.500 M
Breadth (mid):	9.000 M
Depth (mid):	4.550 M
Draught (mid):	3.547 M

VESSEL:	T/B "MEGALOCHARI XIV"	IMO NO.:	9199452
TITLE:	GENERAL ARRANGEMENT		
 <b>ALPHA MARINE CONSULTING LTD.</b> MARINE CONSULTANTS & SURVEYORS T: +90 210 4618717 (8 lines), F: +90 210 4523353 mail@alphamm.com   www.alphamm.com	DWG. NO.:	4034-05-0	
	SCALE:	1:100	
	DATE:	21/03/2014	